
DISCUSSION GUIDE

SUNDAY MAY 4

UPCOMING EVENTS

Sunday Worship Service

10AM In-Person and Online

May 7 Shepherd's Training

7:30PM at Lighthouse Church

May 11 Mother's Day

10AM at Lighthouse Church

May 18 Child Dedication

Sign up at lighthousecoc.com

Aug 1-3 LA Jubilee Conference

Register at lighthousecoc.com

OUR VISION

Love God.

Live Change.

Light the Way.

OUR VALUES

God's Word: is our Narrative

We discover who God is and how we participate in his story.

Love: is our Calling

We honor and value one another above ourselves.

Serving: is our Passion

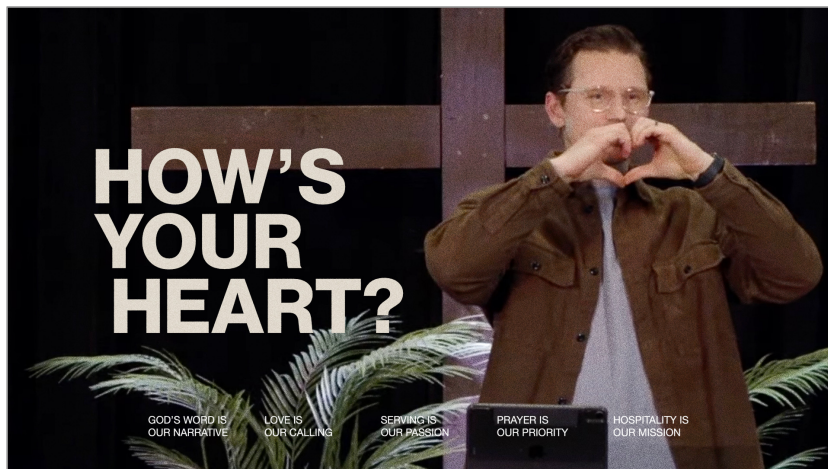
We do everything with zeal and ownership.

Prayer: is our Priority

We pray as our first response, not our last resort.

Hospitality: is our Mission

We seek opportunities to share what God has given us.



HOW'S YOUR HEART?

In Mark 4, Jesus gives the parable of the sower, emphasizing that the condition of our heart determines whether the seed, the word of God, takes root and bears fruit in our lives. The word of God is always powerful and consistent, but its impact depends on whether our heart is calloused, shallow, distracted, or healthy. Jesus used parables to separate casual listeners from true disciples, hiding deep truths for those willing to lean in and seek understanding. A healthy and receptive heart will experience a supernatural harvest that only God can produce.

ONLINE GIVING

You can give either a one-time gift or setup re-occurring giving that fits your personal pay schedule using PushPay. There are two ways you can do this. You can go to lighthousecoc.com and click the "give" button or you can text **LCOC** to **77977** and you will receive a text message with directions to follow. Finally, you can also write a check to Lighthouse Church and mail it to 3508 East Temple Way, West Covina, CA 91791. Thank you so much for investing into the mission of Jesus Christ!

PRAYER REQUESTS

LA Wildfires Please pray for all who have been affected by wildfires.

Jan Dickens Please continue to pray for his health and healing.

Mark Ramirez Please pray for healing for his health complications.

Amira Angulo Please pray for Amira to make a full recovery from surgery.

Andy Harrison Please pray that God would completely heal his kidneys.

Ruben Narvaez Please pray that God would heal him of cancer.

CONTACT US

Elders and Wives

Joe & Sandy Newfield

323.697.4610

Dave & Shirley Moss

909.896.9094

Married and Family

Michael & Ayumi Meade

626.598.0232

Spanish Ministry

David & Patty Molina

562.760.8938

Singles Ministry

Raymond & Amie

626.392.8821

College Ministry

Bryant & Katelyn Torres

909.270.6299

Teen Ministry

Isaiah & Vanessa

626.733.3330

DISCUSSION QUESTIONS

Conversation Starters

- Do you regularly go to the doctor for health checkups or do you generally avoid going to the doctor? Explain why.

Sermon Discussion

- Read Mark 4:1-20, Luke 5:31-32, Matthew 23:27
- 1. Mike shared that he recently received a comprehensive health checkup—because no matter how good you may look on the outside, if there's something wrong internally, it will eventually manifest in your life. This is why Jesus wasn't impressed by outward appearances, he always looked at the heart. Why do you think it's so tempting to focus on external behavior? What might a regular spiritual checkup look like in your life?
- 2. **Read Mark 4:10-13.** Jesus shows us the difference between the crowd and the disciples. What do you think makes someone a disciple rather than just part of the crowd? Are there any "crowd" mentalities or comforts you are holding on to that could be keeping you from fully pursuing Jesus?
- 3. In the parable, Jesus sows the seed of his word even on hard, rocky, or thorny soil. What does this teach us about his grace? Have you ever had a season where your heart wasn't ready, but God still kept speaking? How does knowing he sows generously affect the way you receive or share his word?
- 4. If the seed (God's word) doesn't produce fruit, the problem isn't with the seed, but with the soil (our hearts). How does that truth change the way you view spiritual growth? Have you ever blamed God or people for a lack of spiritual growth?
- 5. **Read Mark 4:14-20.** Jesus outlines four soils that represent four heart conditions. Which of the four heart conditions—**calloused, shallow, distracted, or healthy**—do you most relate to right now and why? What signs help you recognize when your heart is shifting toward one of the unhealthy types?
- 6. Whatever enters your ear affects your **heart**. Is there anything you are currently listening to that is causing your heart to harden, isolate, drift or blame? How can you cultivate a heart that is ready to receive and grow the word of God?